



UbiBot[®] On-Premises Platform Installation Instruction

Dalian Cloud Force Technologies Co., Ltd.

www.ubibot.com

Content

I. Installation.....1

 i. Install UbiBotOPP.....1

 ii. Run UbiBotOPP..... 3

 iii. Privatization Environment Parameter Setting..... 4

II. Activate the device..... 8

 i. Install the CH340 driver.....8

 ii. Install PC Tool.....8

 iii. Activate device.....9

III. Log in the console..... 12

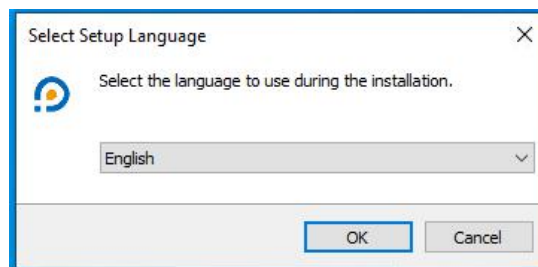
I. Installation

i. Install UbiBotOPP

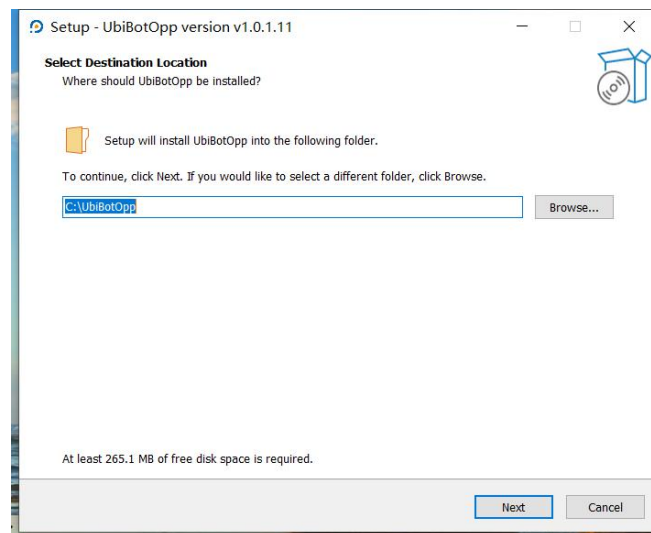
a Double click "UbiBotOPPSetup" .

CH341SER	2022/1/28 14:32	应用程序	277 KB
PcToolsIO Setup 1.2.1	2022/1/29 11:18	应用程序	75,818 KB
UbiBotOppSetup	2022/1/22 18:07	应用程序	75,601 KB

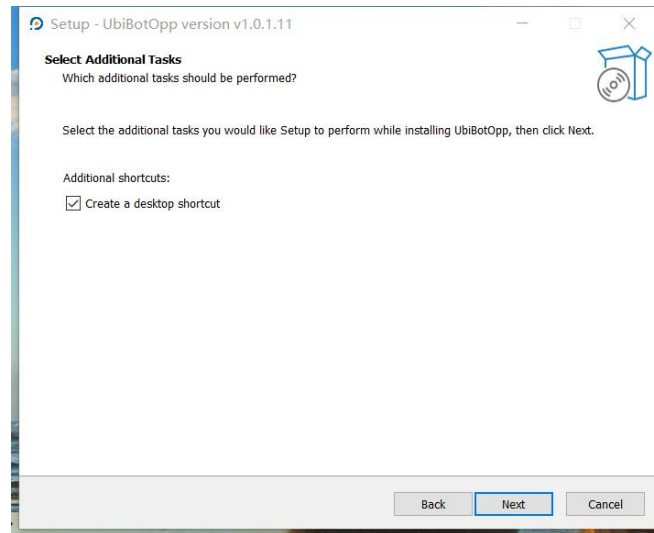
b Select setup language, click **[Next]**.



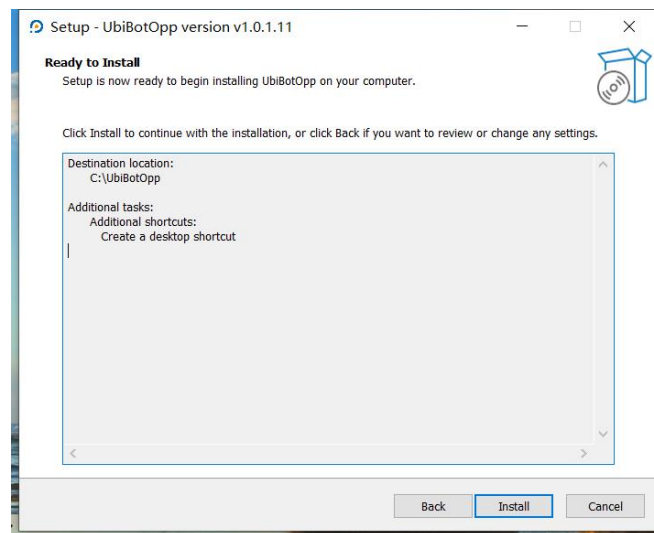
c Select destination location. The default installation path is "C:\UbibotOpp" , then click **[Next]**.



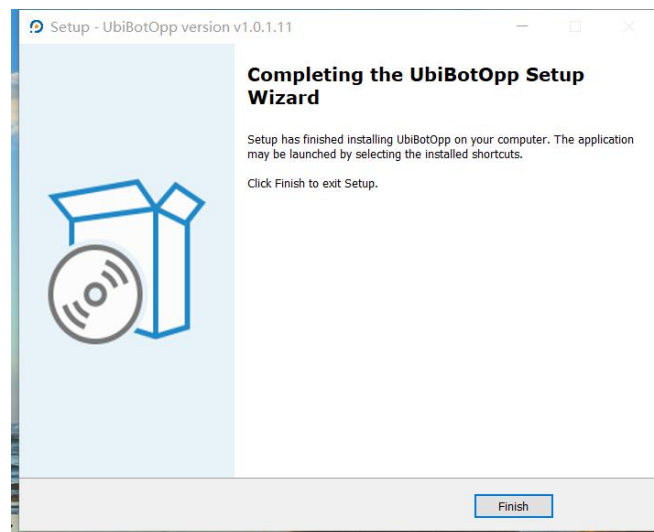
d Select additional tasks, then click **[Next]**.



e Click **[Install]**.

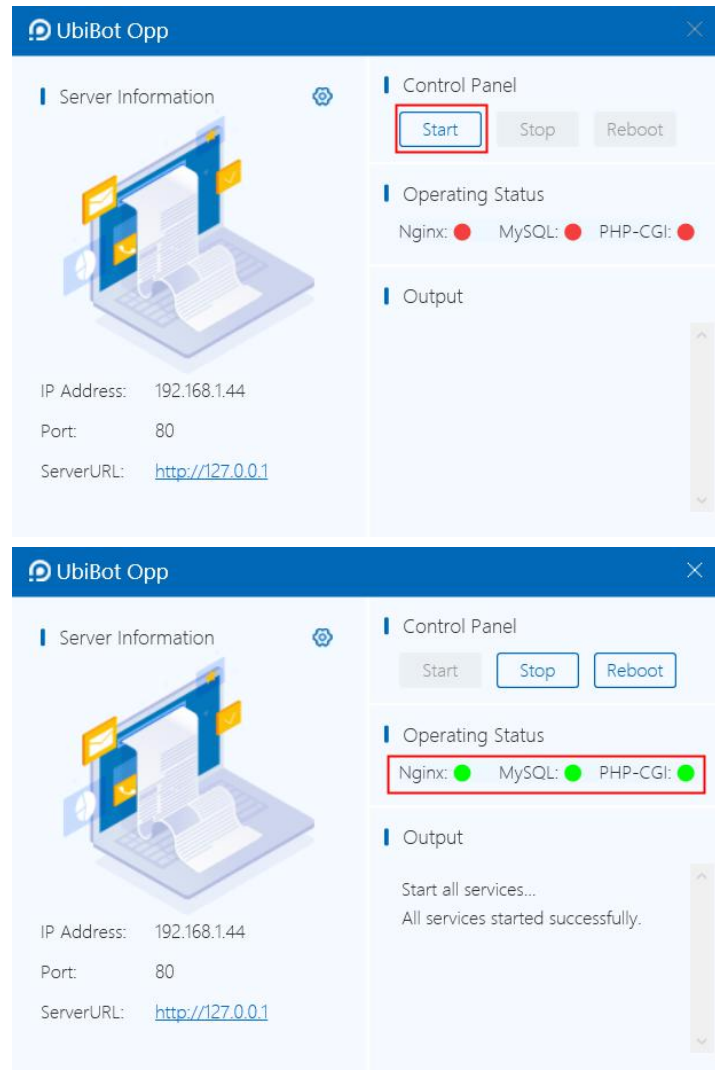


f Click **[Finish]**.

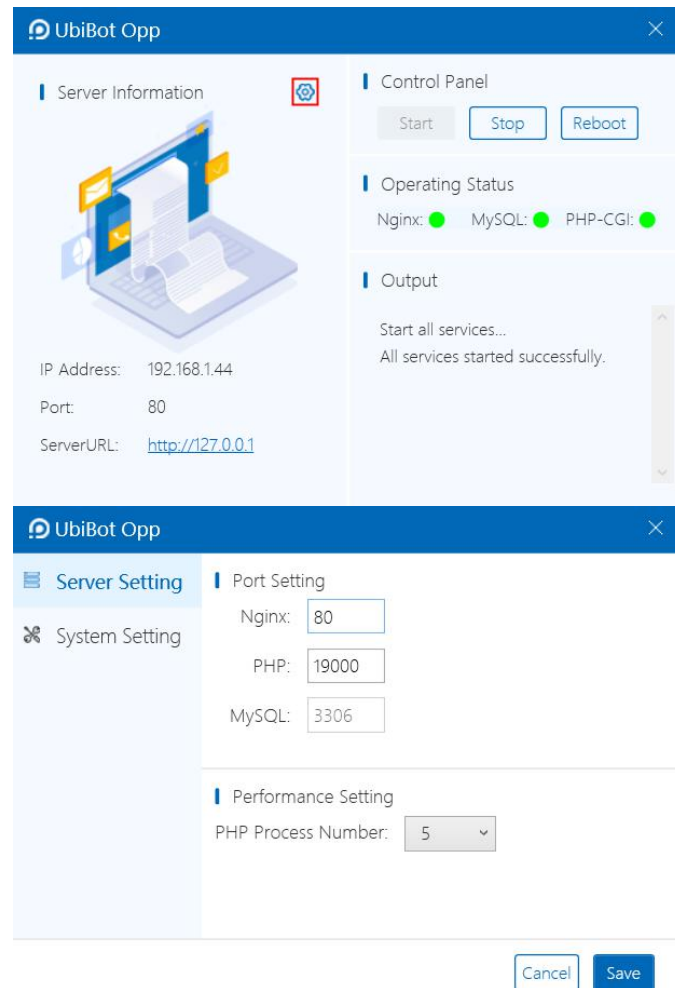


ii. Run UbiBotOPP

Double click UbiBotOPP, then click **[Start]**. The operating status will turn green.

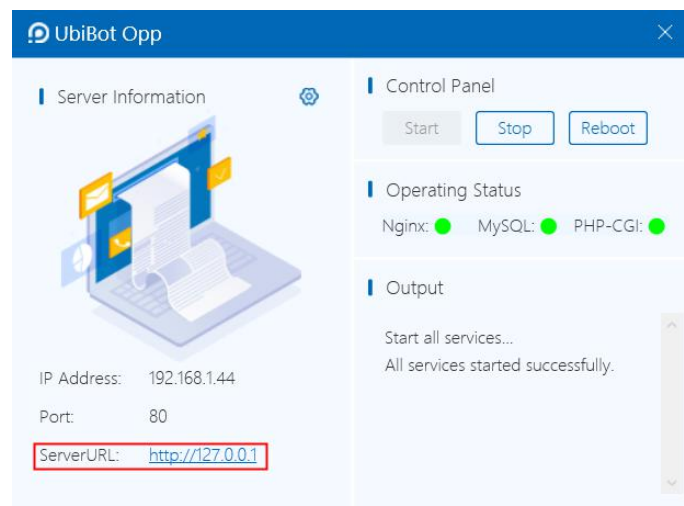


Note: If the system prompts that the port is occupied, please click the Settings button to modify the port.

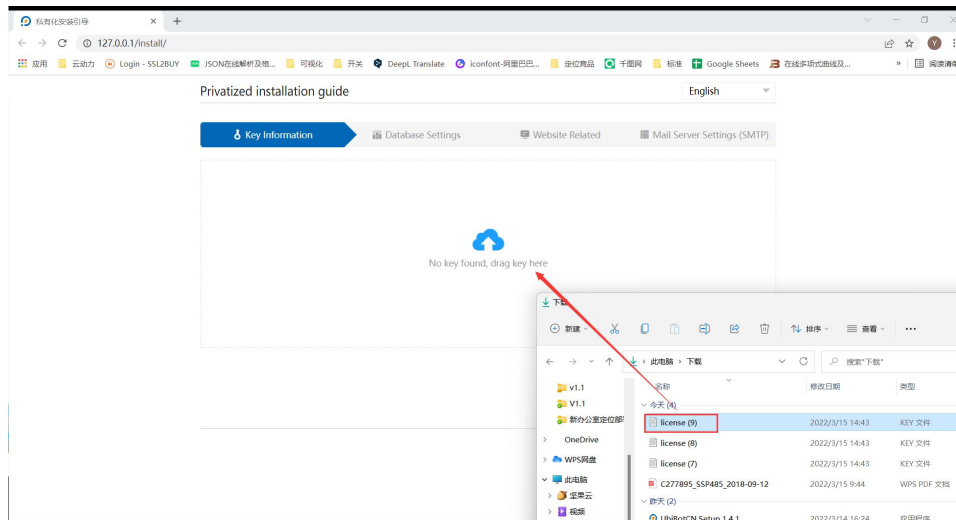


iii. Privatization Environment Parameter Setting

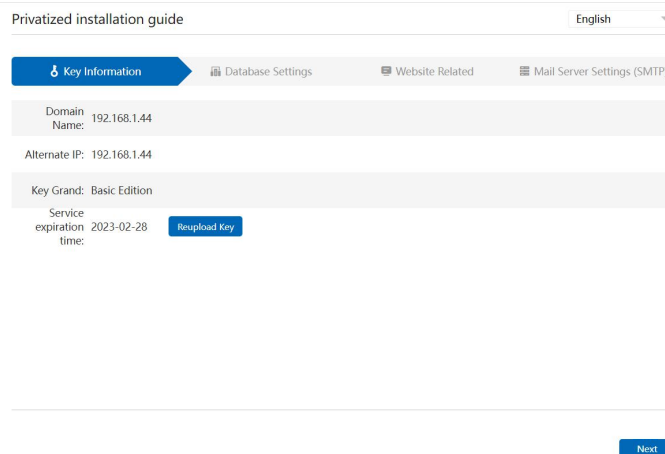
a Click the ServerURL. After the first installation, the page will jump to the setting page. If you need to modify the settings later, please go to <http://127.0.0.1/system/>.



b Upload the license which download in the App Center, click **[Next]**.



After the upload, the key information will be shown on the page.



c If no special setting is needed, please click **[DB Link Test]** to check whether the database is connected. Click **[Next]**.

Privatized installation guide English

[Key Information](#) [Database Settings](#) [Website Related](#) [Mail Server Settings \(SMTP\)](#)

default time zone: Asia/Shanghai (UTC +08:00)

Database Link: 127.0.0.1

Database Port: 3306

Database Name: iot_opp

Database Username: root

Database Password: root

[DB Link Test](#) [Import Database](#)

[Previous](#) [Next](#)

Privatized installation guide English

[Key Information](#) [Database Settings](#) [Website Related](#) [Mail Server Settings \(SMTP\)](#)

default time zone: Asia/Shanghai (UTC +08:00)

Database Link: 127.0.0.1

Database Port: 3306

Database Name: iot_opp

Database Username: root

Database Password: root

[DB Link Test](#) [Import Database](#)

[Previous](#) [Next](#)

Note: [Import database] will overwrite the privatized data and is recommended only for the first installation.


After click **[Import Database]**, please click **[DB link test]** again to confirm the database link is successful.


d Set website related information, you can set the name, logo and background image. Click **[Next]**.


Privatized installation guide English

[Key Information](#) [Database Settings](#) [Website Related](#) [Mail Server Settings \(SMTP\)](#)

Website Name:

Website Logo:  (LOGO type is JPG/PNG, size is 31px * 31px) [Upload image](#)

Login Logo:  (LOGO type is JPG/PNG, size is 120px * 37px) [Upload image](#)

Background Image:  (Login background type is JPG/PNG, size is 1920px * 1080px) [Upload image](#)

[Previous](#) [Next](#)

e If you need to use the email alert function (not supported in the free version), please set up the Mail Server Settings. Click **[Finish]**, then it will jump to the console platform.

Please check with the mail service provider you are using for the relevant settings. Here is an example, the relevant settings are as follows.

Privatized installation guide English

[Key Information](#) [Database Settings](#) [Website Related](#) [Mail Server Settings \(SMTP\)](#)

Mail Server:

Mail server port:

Email account:

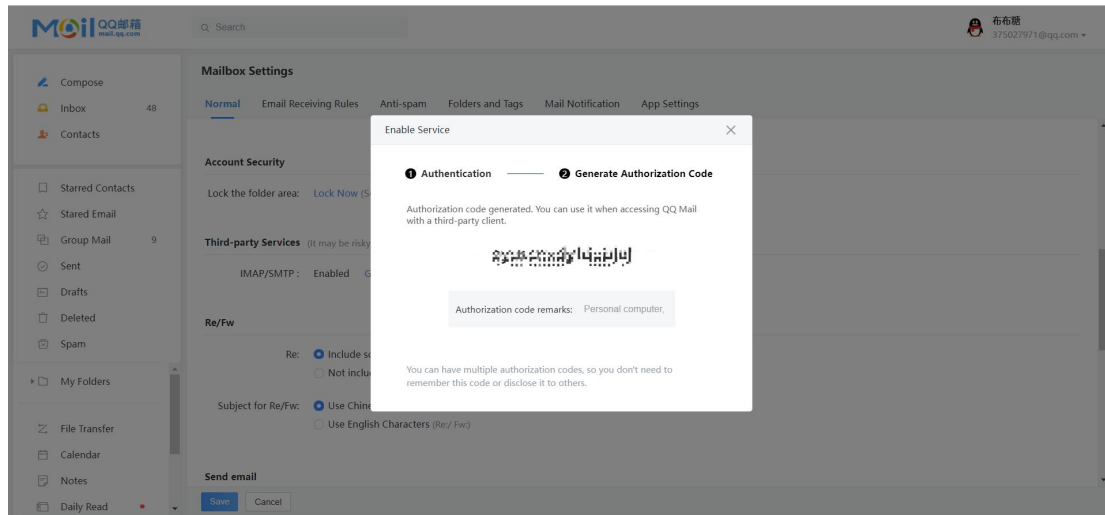
Email authorization code:

Sending email:

Sender name:

[Email sending test](#) [Email Template Settings](#)

[Previous](#) [Finish](#)



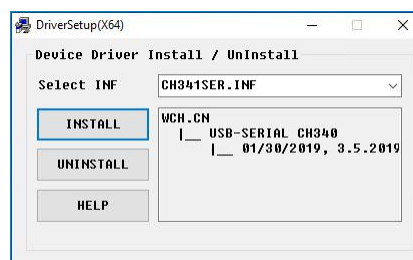
II. Activate the device

i. Install the CH340 driver

a Double click “CH341SER” .

名称	修改日期	类型	大小
CH341SER	2022/1/28 14:32	应用程序	277 KB
license.key	2022/1/29 12:14	KEY 文件	1 KB
PcToolsIO Setup 1.2.1	2022/1/29 11:18	应用程序	75,818 KB
UbiBotOppSetup	2022/1/22 18:07	应用程序	75,601 KB

b Click [Install].

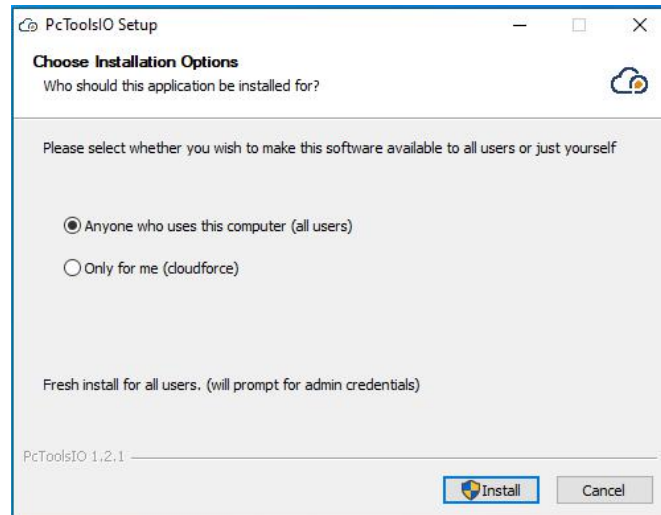


ii. Install PC Tool

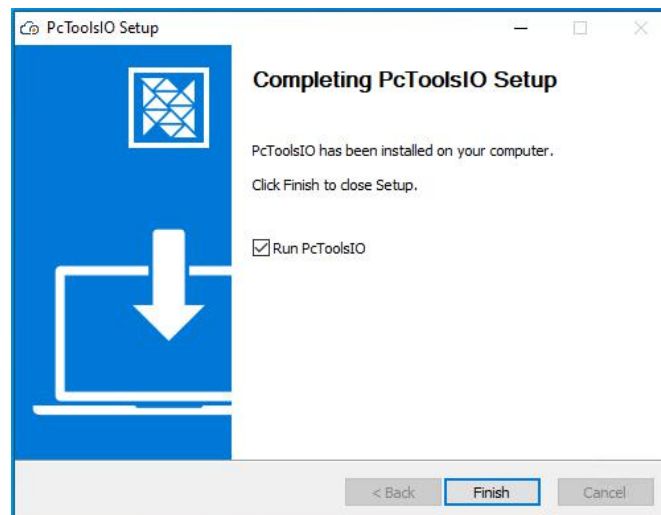
a Double click “PcToolsIO Setup 1.2.1” .

CH341SER	2022/1/28 14:32	应用程序	277 KB
license.key	2022/1/29 12:14	KEY 文件	1 KB
PcToolsIO Setup 1.2.1	2022/1/29 11:18	应用程序	75,818 KB
UbiBotOppSetup	2022/1/22 18:07	应用程序	75,601 KB

b Click [Install].



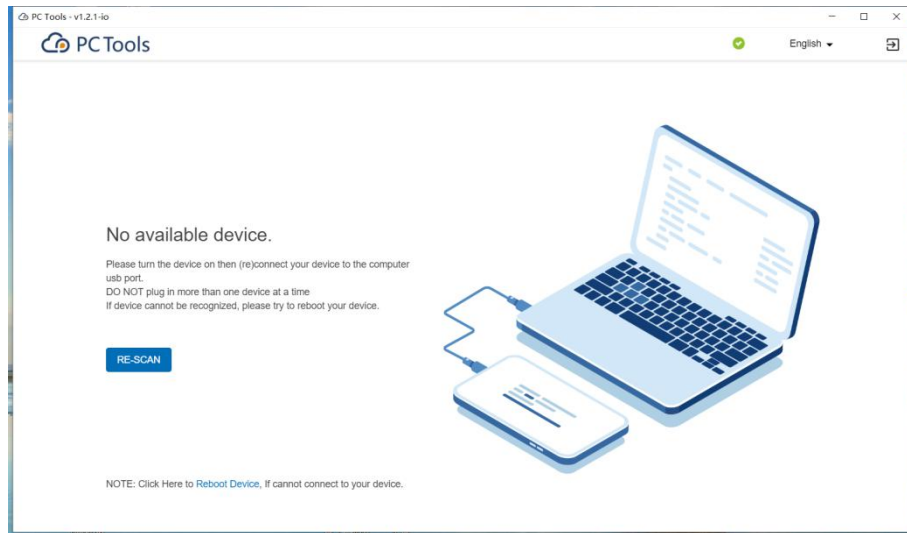
c Click **[Finish]**.



iii. Activate device

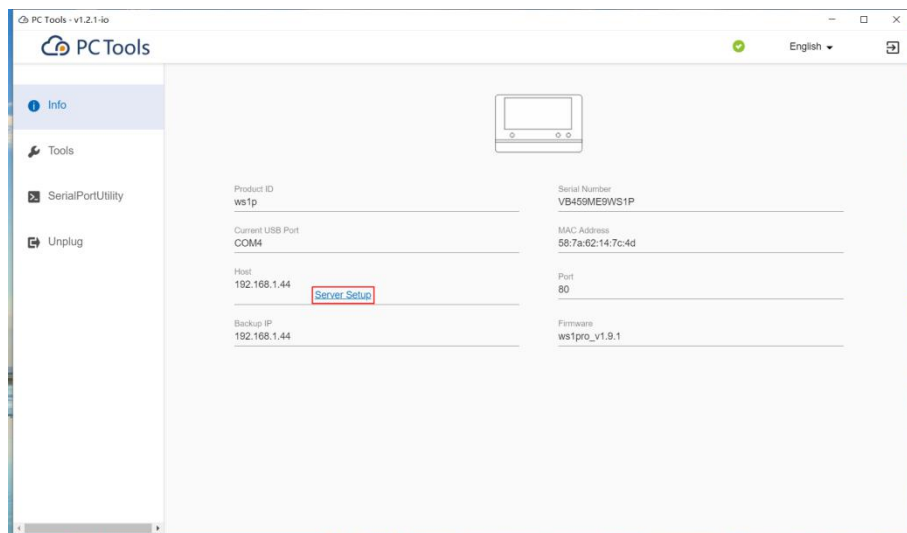
Please ensure that the device to be activated is not bound. If not, restore the factory setting of the device first.

a Double click PC Tool.

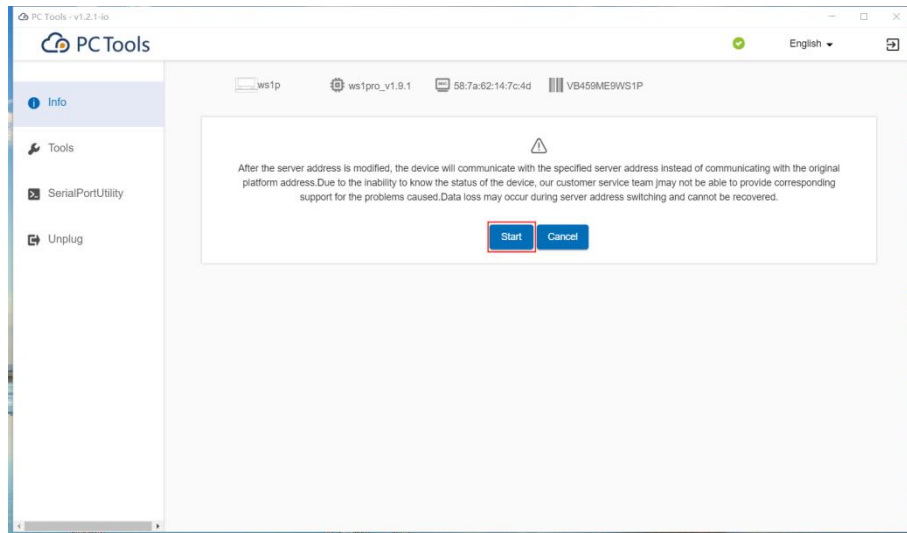


b Connect the device to the computer with a USB cable.

c Click [**Server Setup**].

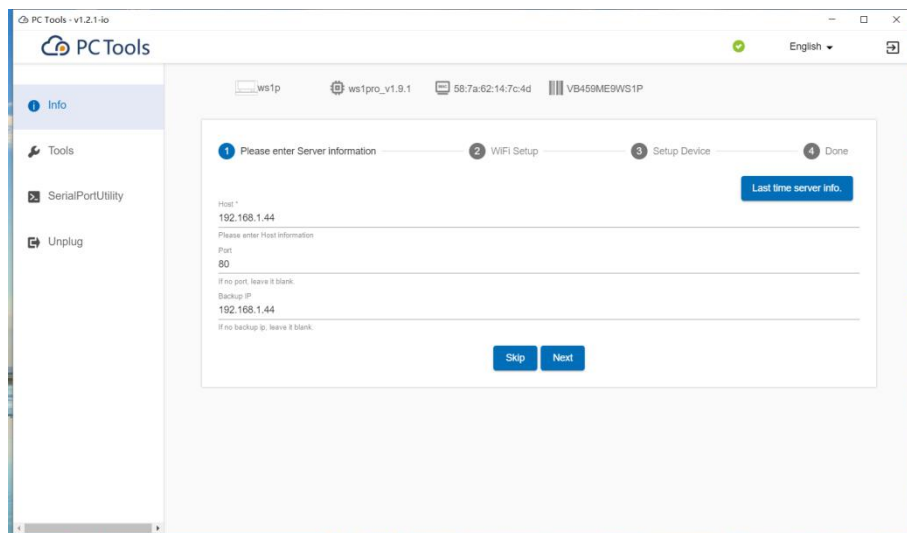


d Click [**Start**].

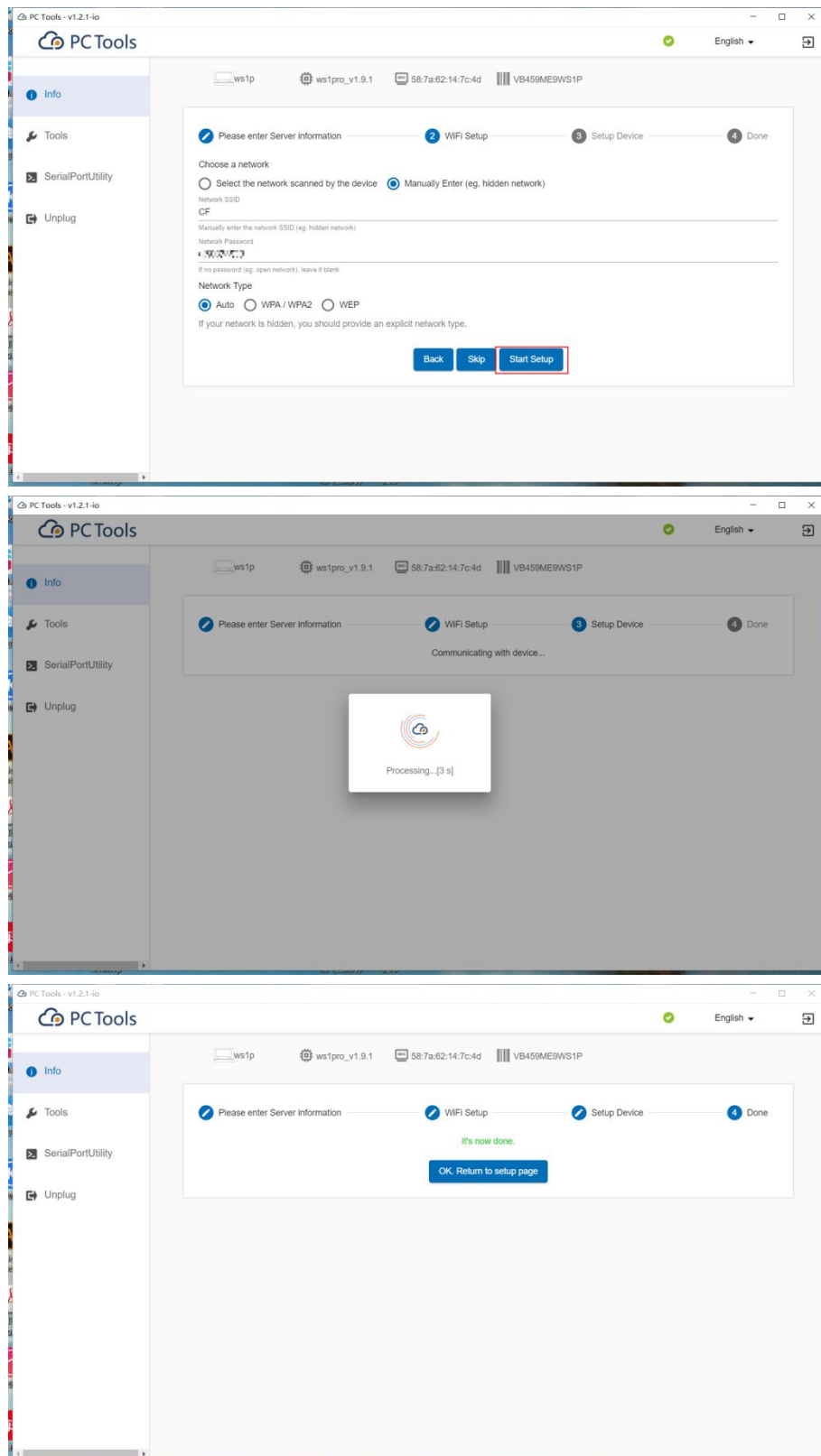


e Enter the host, port and backup IP, then click **[Next]**.

- Host: the host name set in the key.
- Port: 80(default). If the port in UbiBotOPP has been modified, please fill in the new port number.
- Backup IP: the IP address set in the key.



f WiFi setup. Choose the network, set the Network SSID and password, then click **[Start Setup]**. After the setup, the device will be shown in the console platform.

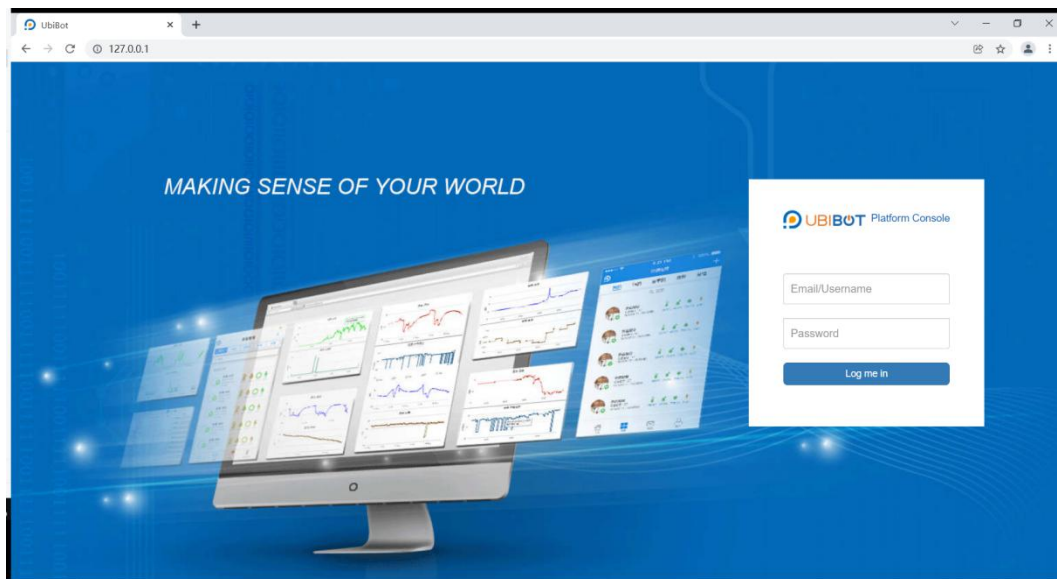


III. Log in the console

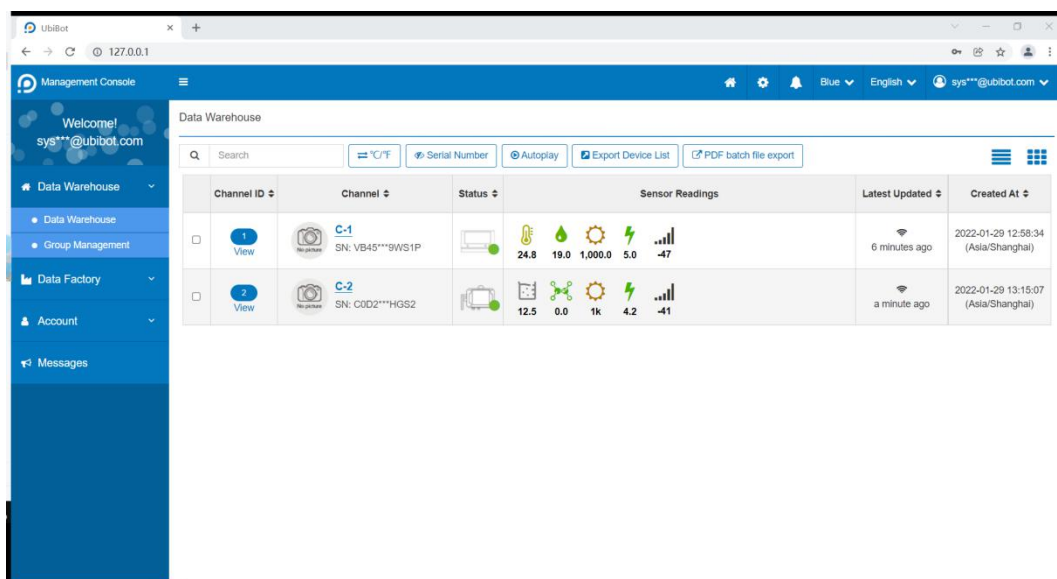
Access <http://127.0.0.1/> (local server only) or the specified host

address, such as <http://192.168.1.44>.

The default user name is admin, and password is 123456.



Click **[Data Warehouse]**, the activated devices are shown in the page.



Note: If you need to bind the device again after deleting it, restore the factory setting of the device first.