



User Guide v 1.0

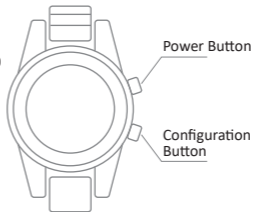
Smart Watch HW1

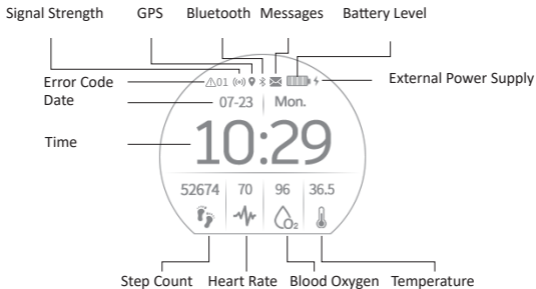
www.ubibot.com

INTRODUCTION

The UbiBot HW1 Smart Watch is a versatile wearable device that integrates multiple sensors to monitor your vital signs in real time. It measures blood oxygen (SpO₂), heart rate, heart rate variability (HRV), location, step count, and more. Data are continuously recorded and uploaded via cellular network to the UbiBot IoT platform.

It allows you to access and review your health information anytime through the mobile app or a web browser. The platform offers comprehensive features for data aggregation, analysis, reporting, and alerts, delivering a complete health-tracking experience.





DEVICE OPERATIONS

• Power On

Press and hold the Power button for 3 seconds until the

screen lights up, then release.

- **Turn Screen On/Off**

When powered on, press the Power button once to toggle the display.

- **Navigate / Return**

With the screen on, press the Configuration button to cycle through menus or return to the previous screen.

- **Power Off**

Press and hold the Power button for 3 seconds until the display turns off, then release.

- **Reset to Default Settings**

When powered off, press and hold both the Power and Configuration buttons simultaneously for 10 seconds to restore factory settings.

BASIC TOUCHSCREEN GESTURES

Tap: Select or confirm an item

Swipe Down: Scroll down

Swipe Up: Scroll up

Swipe Left: Go back to the previous screen

MESSAGE

The watch stores up to nine of the most recent messages from the platform. When a new message arrives, the watch vibrates and the screen lights up. If you miss it, tap the screen to view your message history.

SETTINGS

- **Screen**

Set how long the display stays on when inactive and adjust vibration duration for alerts.

- **°C/°F**

Choose °C or °F display.

- **Bluetooth**

Enable or disable Bluetooth connectivity.

- **Manual Upload**

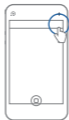
Upload stored sensor data to the platform immediately.

- **Clear Messages**

Delete all messages on the watch.

DEVICE SETUP

1. Download the UbiBot Connect app from www.ubibot.com/setup or search “UbiBot Connect” in the App Store or Google Play.
2. Open the app and tap the + icon.
3. Wake the watch by pressing the Power button and navigate to the Info screen.
4. Scan the QR code shown on the watch screen.
5. Follow the on-screen instructions to complete device pairing.



TECHNICAL SPECIFICATIONS



4G Cat.1



1.22-inch IPS TFT color touchscreen



450 mAh Li-ion polymer, high-voltage



48 x 52 x 15.5mm



256 Kb SRAM + 4 Mb flash (supports breakpoint resume storage)



Magnetic USB



-10 °C to 60 °C, 10 % to 85 % RH



Making Sense of Your World

www.ubibot.com